



IMJIN PARKWAY WIDENING & ROUNDABOUT PROJECT

Construction Activities Update September 16 - 27, 2024

PLEASE BE ALERT! Traffic control is in place for your safety!
The enforceable speed limit through the construction zone is 25 MPH.
Preston Drive will be closed at Imjin Parkway until late October 2024.

What's Happening in the Next 2 Weeks (September 16 - 27)?

Day Shift

- Backfill the concrete retaining wall near Abrams Drive.
- Continue installing streetlight & fiber optic conduit, and irrigation service lines between Marina Heights Drive and Imjin Road.
- Prep and haul material from the Phase 2 area near Imjin Road to Phase 1 fill between Abrams Drive and Marina Heights Drive. The contractor will have a flagging operation in place for this work.
- Continue importing material, grading, and installation of base rock for roadway section between Marina Heights Drive and Imjin Road.
- Continue grading and installation of base material for bike path between Abrams Drive and Marina Heights Drive.
- Continue installing curb & gutter and median curb between Abrams Drive and Marina Heights Drive.
- Complete backfill and tie-in for the Army's treated ground water piping system and resume grading operations in this area.
- Continue environmental monitoring of contractor activities job-wide.

Night Shift

- Night work is anticipated to pave a transition roadway west of Preston Drive. This transition will move traffic from the new roadway west of Preston Drive back over to the existing traffic lanes on the south side of the concrete barriers. This work is tentatively scheduled for the week of 10/7 but could be impacted by the delay in PG&E work. We will provide more specific information when dates and times are scheduled.

Activities That Took Place During the Week of September 9 – September 13

- Concrete retaining wall construction near Abrams Drive – strip and load out forms.
- Continued grading and placing of base rock material for roadway section between Abrams Drive and Imjin Road.
- Continued grading and placing of base material for bike path section between Abrams and Marina Heights Drive.
- Continued preparing material on south side of Imjin Parkway for hauling operation. The hauling activity has been delayed until PG&E verifies that an affected gas line is an abandoned line.
- Fused, installed, and tested dual-walled pipe for Army's treated groundwater piping system.
- Formed/placed concrete curb and gutter and extruded concrete median curb for sections between Abrams and Marina Heights Drive.
- Continued grading work for roadway and bike path area at top of Marina Heights Drive.
- Monitored contractor activities and maintenance of perimeter fencing.

Thank you for your patience and for observing safety speed limits!



IMJIN PARKWAY WIDENING & ROUNDABOUT PROJECT

Future Construction Activity and Information: What's Planned in the Future?

- PG&E remove old poles between Reservation Road and Preston Drive – scheduled 10/5.
- Backfill retaining wall near Abrams Drive.
- Pave bike path from Reservation Road to west side of Preston Drive once the PG&E pole relocations has been completed.
- **This week we were advised of additional delays in PG&E utility relocations. This latest delay in relocating PG&E equipment may further delay the re-opening of Preston Drive to late October. PG&E is scheduled to install new poles on 9/21-9/23 but the work to move the lines to the new poles and remove the old poles has been pushed back to 10/5. Once old poles have been removed, the contractor can complete the remaining work to allow the re-opening of Preston Drive. The project team is doing everything we can to make the re-opening happen as quickly as possible after the PG&E work is completed.**

How to Stay Informed

- Please visit the project website at www.imjinparkway.com or contact Edrie De Los Santos (City of Marina) at 831.884.1212

PROGRESS PHOTOS



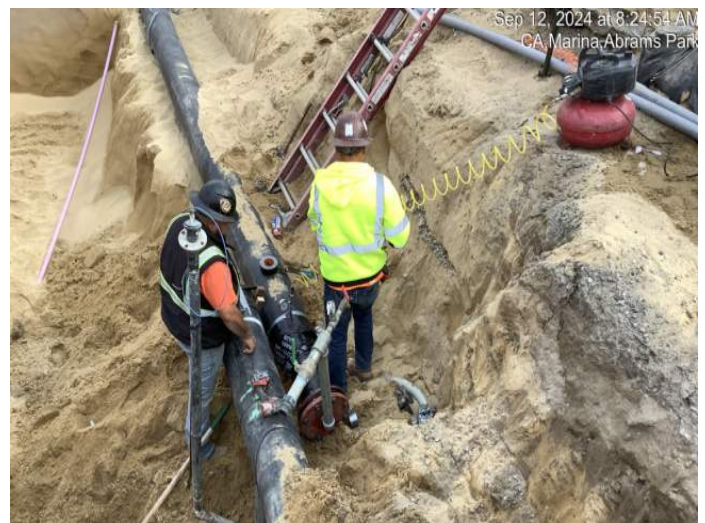
Dual-walled HDPE pipe sections for the Army's treated groundwater system



Fusion machine uses heat and pressure to join pipe sections together (instead of mechanical joints)



Pipe sections installed in the trench



Pressure testing the pipe insures that all joints are good.



IMJIN PARKWAY WIDENING & ROUNDABOUT PROJECT

PROGRESS PHOTOS



Grading and compaction activities on roadway section between Abrams Drive and Marina Heights Drive



Concrete extrusion machine receives concrete in the front and molds/places concrete for median curb

Finishing touches on the extruded concrete curb



Backfilling operations at concrete retaining wall near Marina Heights Drive

Installing geotextile material on roadway side of concrete retaining wall near Marina Heights Drive.