



IMJIN PARKWAY WIDENING & ROUNDABOUT PROJECT

**Construction Activities Update
January 6 – January 17, 2025**

WELCOME TO 2025!

PLEASE BE ALERT!

Traffic control is in place for your safety!

The enforceable speed limit through the construction zone is 25 MPH.

❖ **Marina Heights Drive and Imjin Road** are closed at Imjin Parkway

What's Happening in the Next 2 Weeks (January 6 – January 17)

Day Shift

- Remove old curb & gutter and form concrete new curb, gutter and sidewalk for southwest corner at Imjin Road.
- Continue installing streetlight & fiber optic conduit between Marina Heights Drive and Imjin Road.
- Continue fine grading of roadbed for upcoming paving operation between Marina Heights Drive and western project limit (between Imjin Road and Abrams West).
- Resume earthwork and begin placement of underground facilities on south side of Imjin Parkway between Preston Drive and Christina Williams Memorial.
- Continue environmental monitoring of contractor activities job wide.

Night Shift - No night work is anticipated

Activities That Took Place during the holidays (December 23 – January 3)

- Continue installation of irrigation, fiber optic and street light conduits along Marina Heights Drive and between Marina Heights Drive and Imjin Road.
- Import base rock. Compact and fine grade for roadway section along Marina Heights Drive and between Marina Heights Drive and western project limit.
- Closure of Imjin Road (from Eighth Street to Imjin Parkway).
- Grind out existing roadway on Imjin Road between Imjin Parkway and southern job limit.

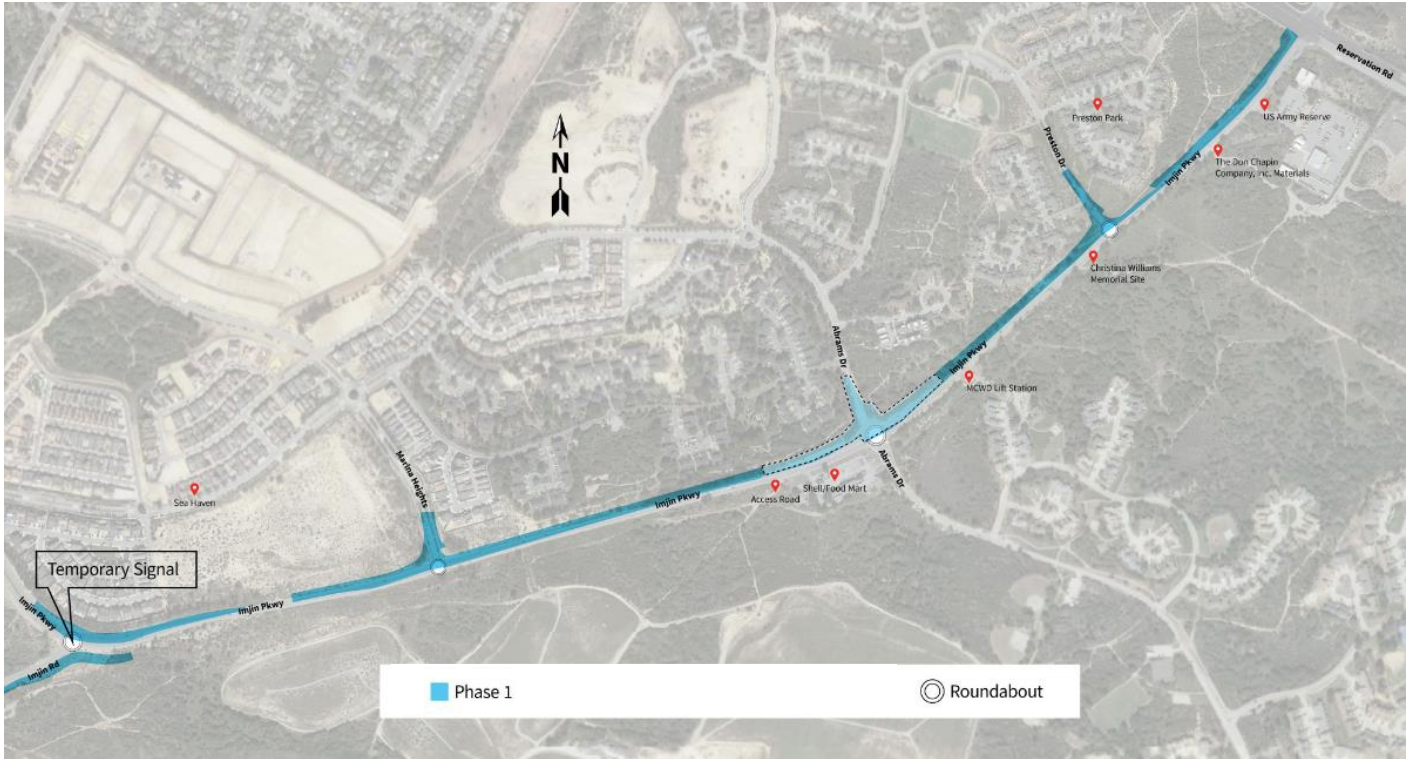
Future Construction Activity and Information: What's Planned in the Future?

- Construction of ½ of the roundabout and adjacent roadway at Marina Heights Drive.
- Roadway paving from east of Marina Heights Drive to project boundary west of Imjin Road including Marina Heights Drive.
- Move into Phase 2: Switch traffic over to the newly constructed north side of Imjin Parkway to construct the south side of the roadway.



IMJIN PARKWAY WIDENING & ROUNDABOUT PROJECT

OVERVIEW OF PHASE 1 – NOTE THAT ABRAMS DRIVE WILL NOT BE PART OF PHASE 1 – it has been moved to Phase 3 to maintain pedestrian access at this intersection for as long as possible.



PROGRESS PHOTOS



Rock check dams in bioretention feature - the bioretention areas are designed to absorb/treat run-off water through the use of plantings and special soil rather than conveying runoff through the storm drain system.



Installing street light conduit for the street lights that will be in the median area of Imjin Parkway.



IMJIN PARKWAY WIDENING & ROUNDABOUT PROJECT



Installed irrigation pipes in the foreground. Purple pipe indicates the use of non-potable recycled water.



Importing base rock for the roadway section at Marina Heights Drive



Closing of Imjin Road at Imjin Parkway



Grinding/removal of existing asphalt roadway on Imjin Road.

How to Stay Informed

- Please visit the project website at www.imjinparkway.com or contact Edrie De Los Santos (City of Marina) at 831.884.1212

Thank you for your patience and for observing safety speed limits!