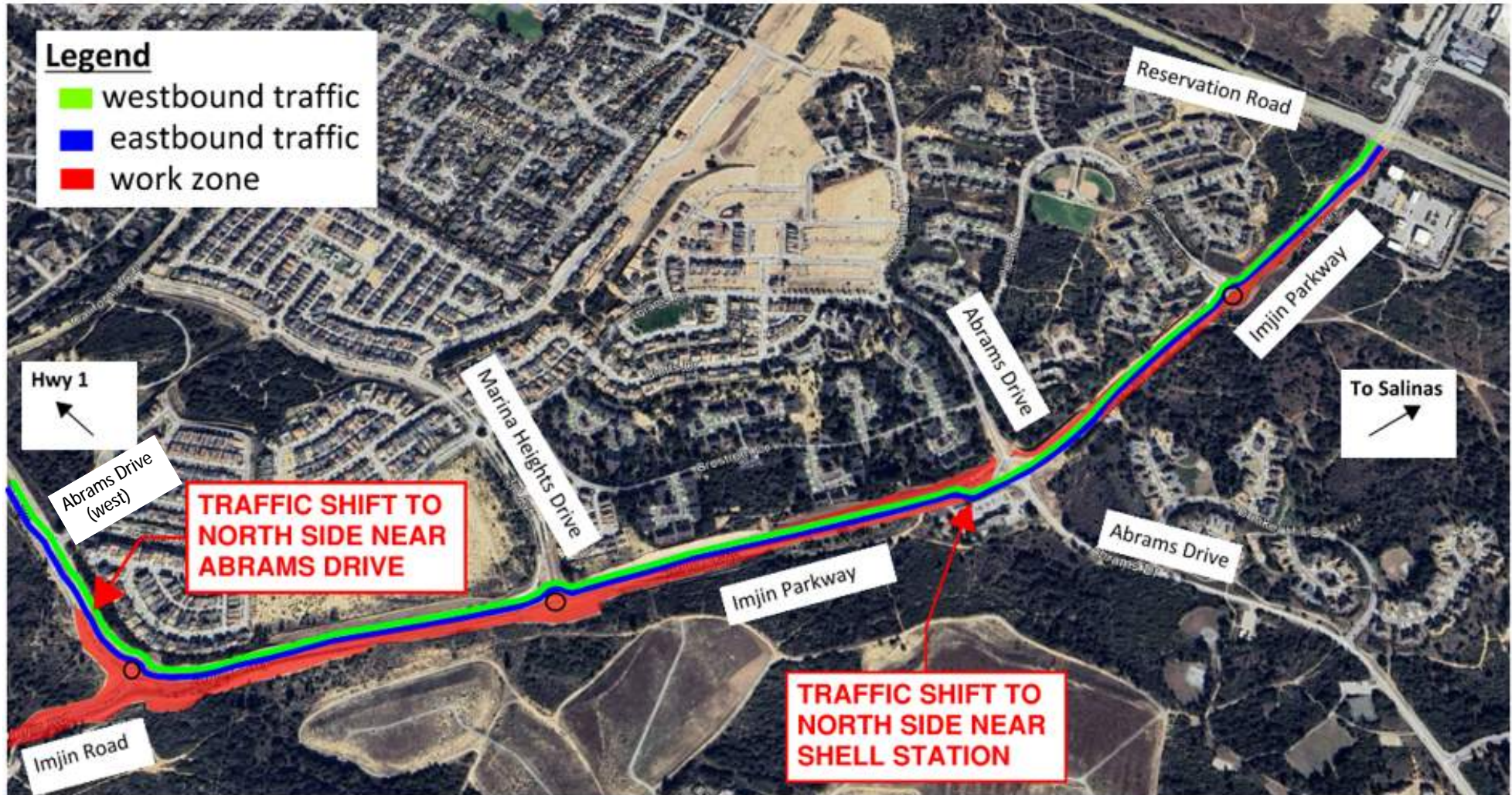


PHASE 2 TRAFFIC FLOW THROUGH THE PROJECT



EFFECTIVE FRIDAY (2/28/2025) MORNING!



CHANGING TRAFFIC CONFIGURATION BETWEEN ABRAMS DRIVE & IMJIN ROAD



EXISTING TRAFFIC FLOWS



NEW PHASE 2 TRAFFIC FLOWS

CHANGING TRAFFIC CONFIGURATION AT ABRAMS DRIVE



**IMJIN PARKWAY WIDENING
& ROUNDABOUT PROJECT**



EXISTING TRAFFIC FLOW



NEW PHASE 2 TRAFFIC FLOW