



IMJIN PARKWAY WIDENING & ROUNDABOUT PROJECT

Construction Activities Update: September 15 – September 26, 2025

PLEASE BE ALERT! Pay attention to the delineators marking the edge of the traveled lane. **Not all pavement areas are open to traffic. Construction work and/or equipment move into and out of areas that are closed to traffic.**

Recommended speed through roundabouts (during construction) is 15 MPH
The enforceable speed limit through the construction zone is 25 MPH

TIPS FOR DRIVING ROUNDABOUTS:

- **VEHICLES ALREADY IN THE ROUNDABOUT HAVE THE RIGHT OF WAY**
- **VEHICLES MERGING INTO THE ROUNDABOUT:**
 - **CHECK FOR PEDESTRIANS CROSSING IN THE AREA**
 - **YIELD TO VEHICLES IN THE ROUNDABOUT AND MERGE SAFELY**

What's Happening in the Next 2 Weeks (September 15 – September 26)

Day Shift

- Continue forming and placing concrete for curb & gutter on Imjin Parkway at Marina Heights Drive.
- Complete median curb near between Army Reserve and Reservation Road.
- Continue installation of streetlight foundations/poles and complete wiring for pedestrian crossings.
- Remove concrete barrier sections from Marina Heights Drive, Abrams Drive and Preston Drive.
- Continue installing irrigation elements and planting landscape materials (native plants and trees).
- PG&E to install electrical conduits, install vaults, and pull conductors beginning 9/26. The alignment begins at Abrams Drive (north), crosses Imjin Parkway and continues along Abrams Drive (south) terminating near Bunker Hill Drive.

Activities That Took Place Last Week (September 8 – 12)

- Formed and placed concrete for curb & gutter at Abrams Drive and median curb between the Army Reserve and Reservation Road.
- Completed construction of left-turn pocket section (on Imjin Parkway) for Shell station access.
- Continued electrical work for pedestrian crossings.
- Construct bioswales at Preston Drive and Abrams Drive.
- Continued installing irrigation materials and native plants in landscape areas between Preston Drive and Abrams Drive.

Traffic Control week of 9/15 – all closures will have access available for emergency vehicles.

- **9/15 – 9/17 from 8:00AM – 4:00PM** - Closure of Abrams Drive (south) – uphill (northbound) between Bunker Hill Drive and Imjin Parkway.
- **9/18 from 9:00AM to 4:00PM** – Closure of westbound Imjin Parkway from Reservation Road through Abrams Drive.
- **9/19 from 8:00AM to 4:00PM** – Closure right-turn in lane of Abrams Drive (north) between Imjin Parkway and Brostrom Drive.



IMJIN PARKWAY WIDENING & ROUNDABOUT PROJECT

Future Construction Activity and Information: What's Planned in the Future?

- Continue coordination with PG&E for their work along Abrams Drive. PG&E will be relocating/upgrading some of their infrastructure. Their work conflicts with our construction completion at Abrams Drive (south) and the full operation of the roundabout at this location. Once they have installed their conduits and pulled the conductors, there will be a scheduled outage of approximately 12 hours in duration to tie in the new service. The PG&E schedule for their work is driving our schedule for project completion; we are doing everything we can to facilitate their planned work.
- Phase 4 – final paving and striping! We will not know the schedule for this next milestone until we have a firm schedule from PG&E. Additionally, we will be moving into our fall weather patterns where cooler/wetter conditions may delay work. The good news is that we are tracking to beat the June 2026 completion deadline, but unable to predict what the actual date of completion will be at this time.

PROGRESS PHOTOS



Placing concrete for splitter island curb & gutter at Abrams Drive (north)



Placing concrete median curb at left turn pocket for food & fuel mart



IMJIN PARKWAY WIDENING & ROUNDABOUT PROJECT

PROGRESS PHOTOS



Placing concrete for median curb between Army Reserve and Reservation Road



Bioswale material (dark colored soil)
installed near Abrams Drive (north)



Paving first layer of asphalt at left turn
pocket for food & fuel mart

How to Stay Informed

- Please visit the project website at www.imjinparkway.com or contact Edrie De Los Santos (City of Marina) at 831.884.1212
- **For access to the Christina Williams Memorial** please contact:
 - Conner Schivo (MPE) 831-277-0137 OR
 - Michaelle Mowrey (City) 831-884-1212

Thank you for your patience and for observing safety speed limits!

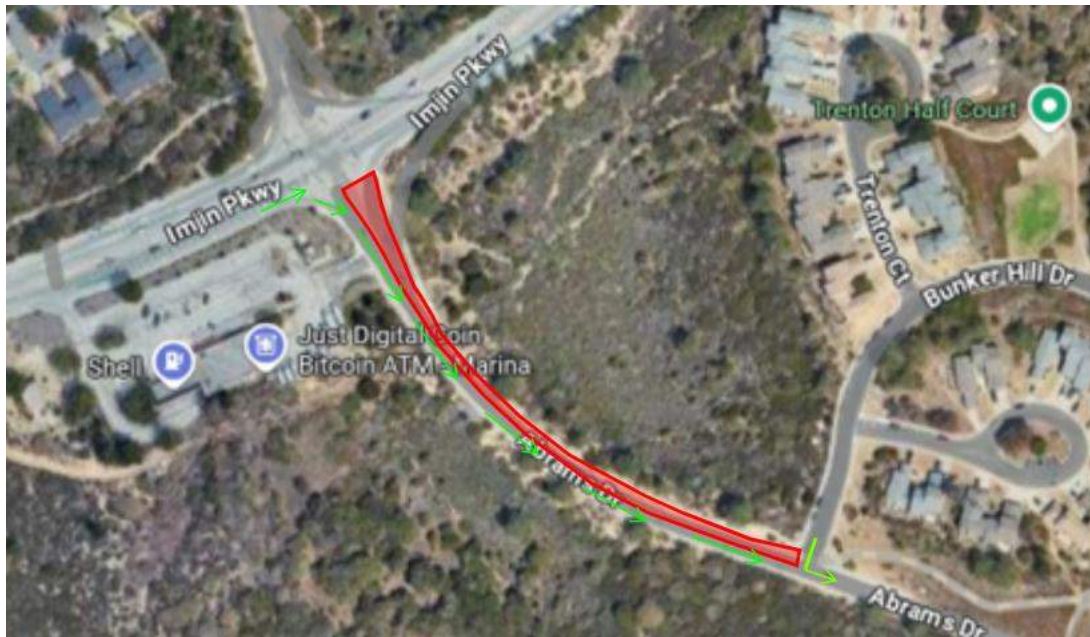


IMJIN PARKWAY WIDENING & ROUNDABOUT PROJECT

TRAFFIC UPDATE

DAY CLOSURES THE WEEK OF 9/15/2025

9/15 thru 9/17 (Monday thru Wednesday) from 8:00AM - 4:00PM – Abrams Drive (south) between Bunker Hill and Imjin Parkway will be closed in the “uphill” (northbound) direction. Access to the food & fuel mart will be available from Imjin Parkway and in the “downhill” (southbound) direction on Abrams Drive (south).



EMERGENCY VEHICLE ACCESS WILL BE AVAILABLE AT ALL TIMES

This closure is required to facilitate PG&E work/improvements. The work performed will include removal/relocation of conflicting vaults in Abrams Drive (south).

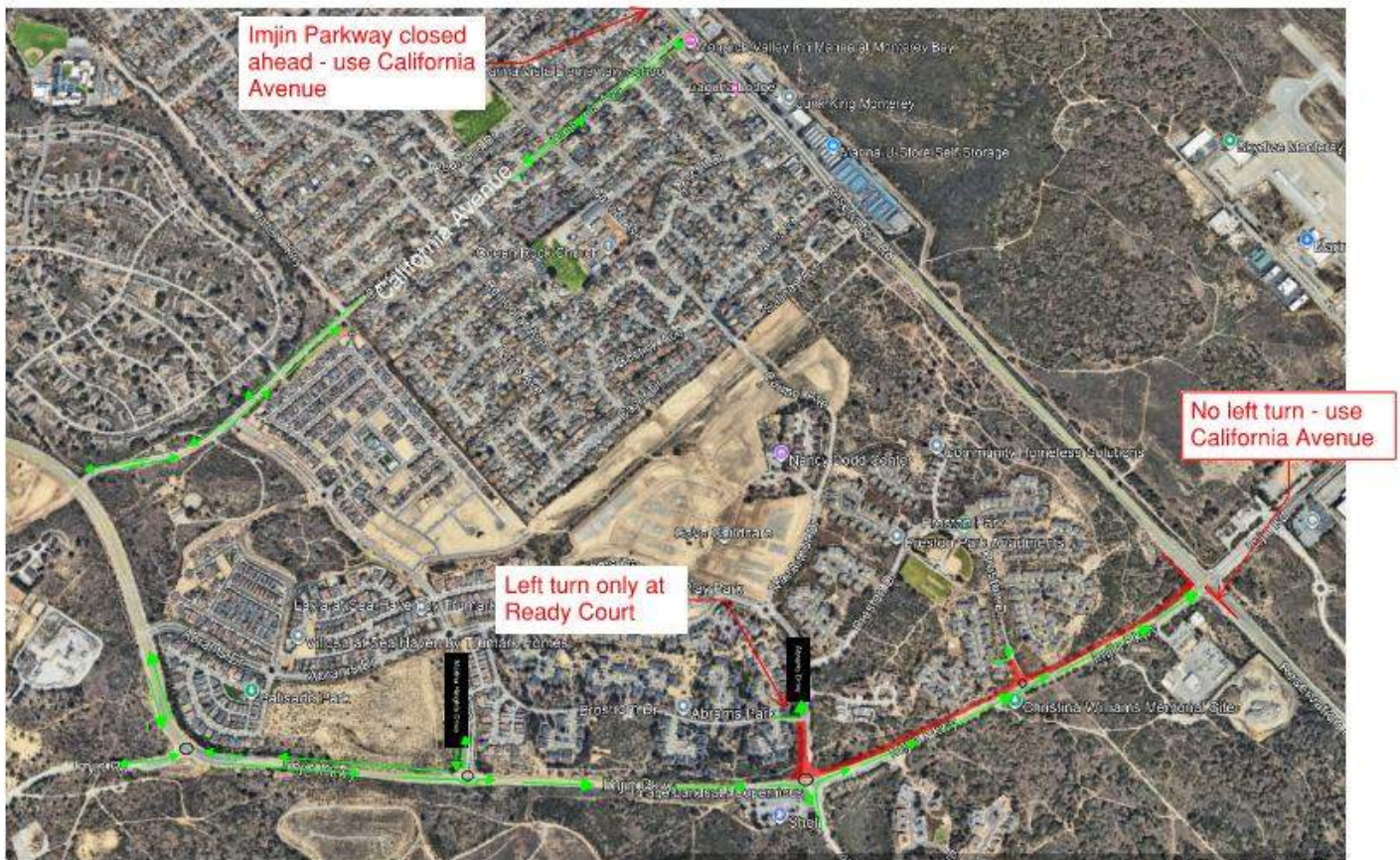


IMJIN PARKWAY WIDENING & ROUNDABOUT PROJECT

9/18 (Thursday) 9:00AM - 4:00PM – Westbound Imjin Parkway will be closed from Reservation Road thru Abrams Drive (north). Detours will be in place for California Avenue.

Eastbound Imjin Parkway will be open but there will be no access to Abrams Drive (north) or Preston Drive.

There will be right turn in/right turn out access to Imjin Parkway in the eastbound direction.



EMERGENCY VEHICLE ACCESS WILL BE AVAILABLE AT ALL TIMES

The work performed will include potholing existing utilities for upcoming underground work that will upgrade electrical infrastructure that services CSUMB (and others).

Our contractor is working to maximize efficiency by scheduling activities that can be performed during these closures to minimize additional traffic shutdowns. Their work will include removing some concrete barriers and installing remaining streetlights (at Abrams Drive).



The work performed will include potholing existing utilities for upcoming underground work that will upgrade electrical infrastructure that services CSUMB (and others).